

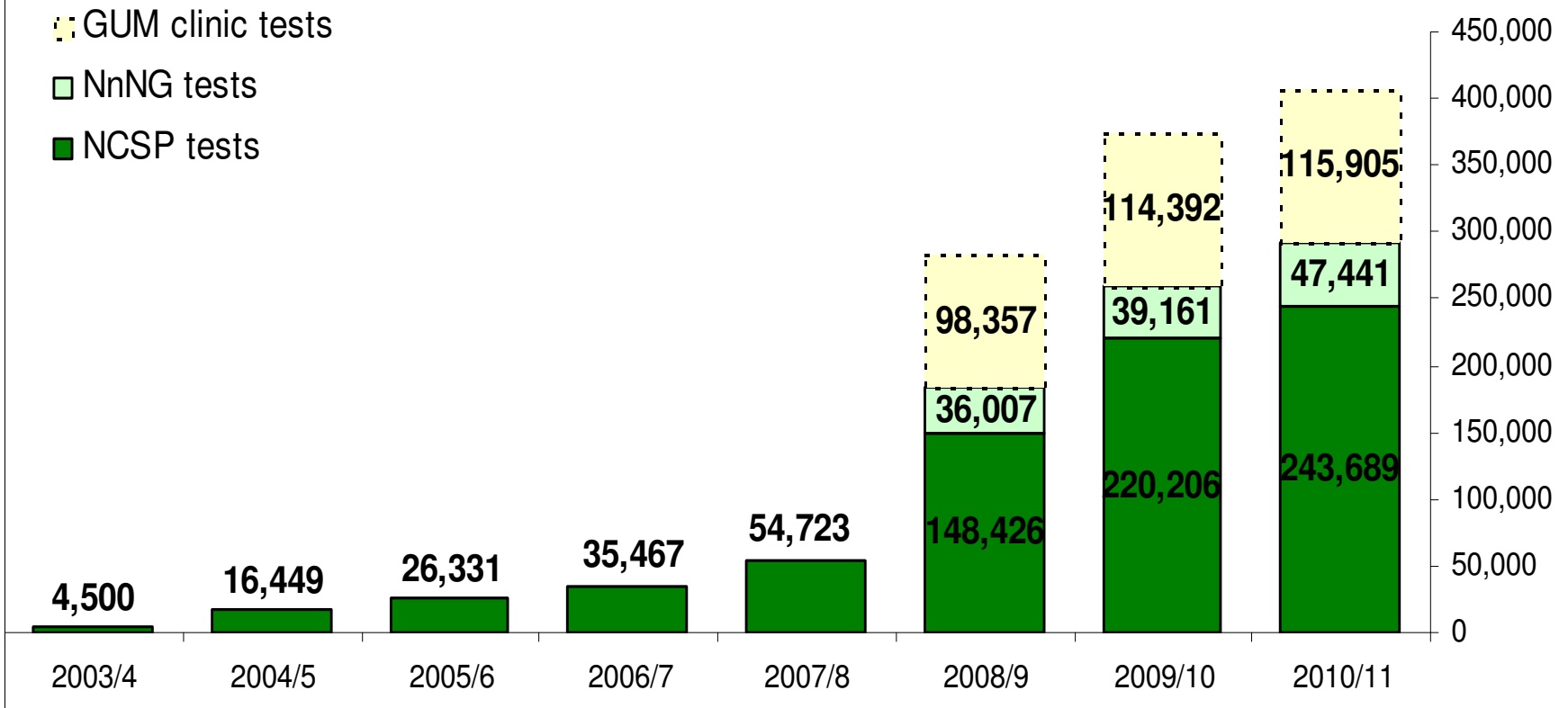
London

Quarters 1-4

April 2010 – March 2011

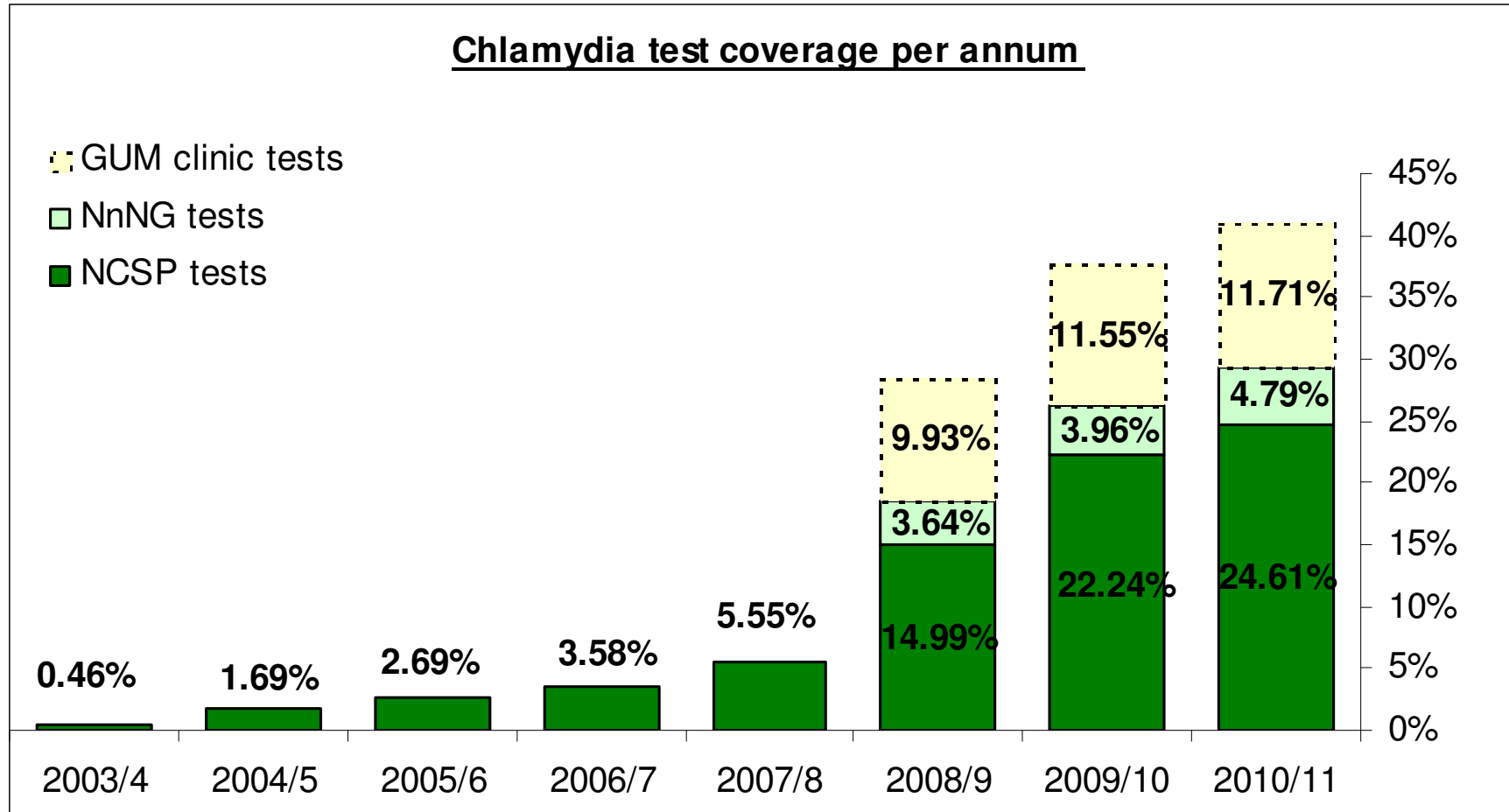
National Chlamydia Screening Programme

Chlamydia tests per annum



- GUM Data (Jan – Dec calendar year)
- 2008/09 GUM Data not complete

Based on those aged 15-24 years.

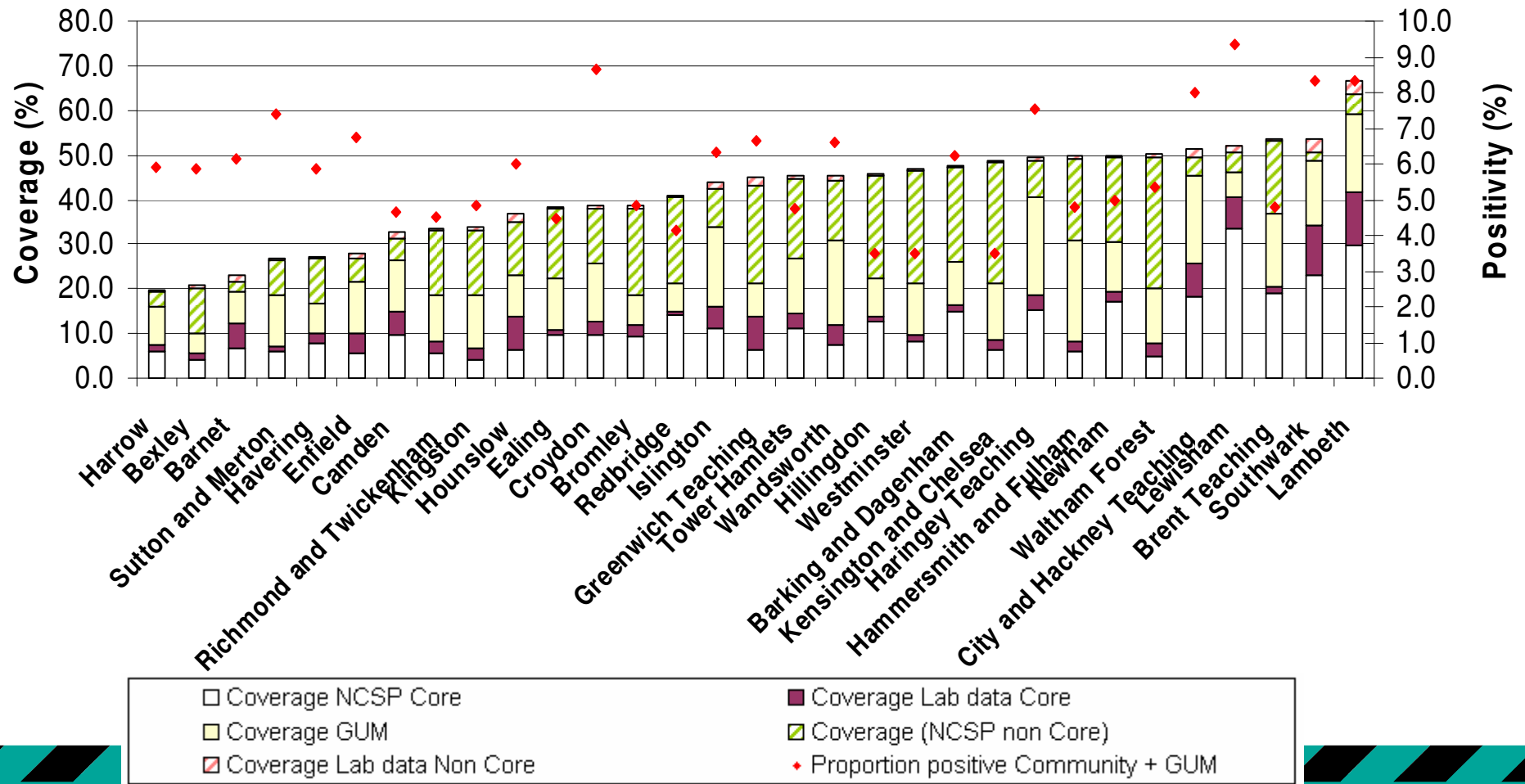


- GUM Data (Jan – Dec calendar year)
- 2008/09 GUM Data not complete

Based on those aged 15-24 years.

London

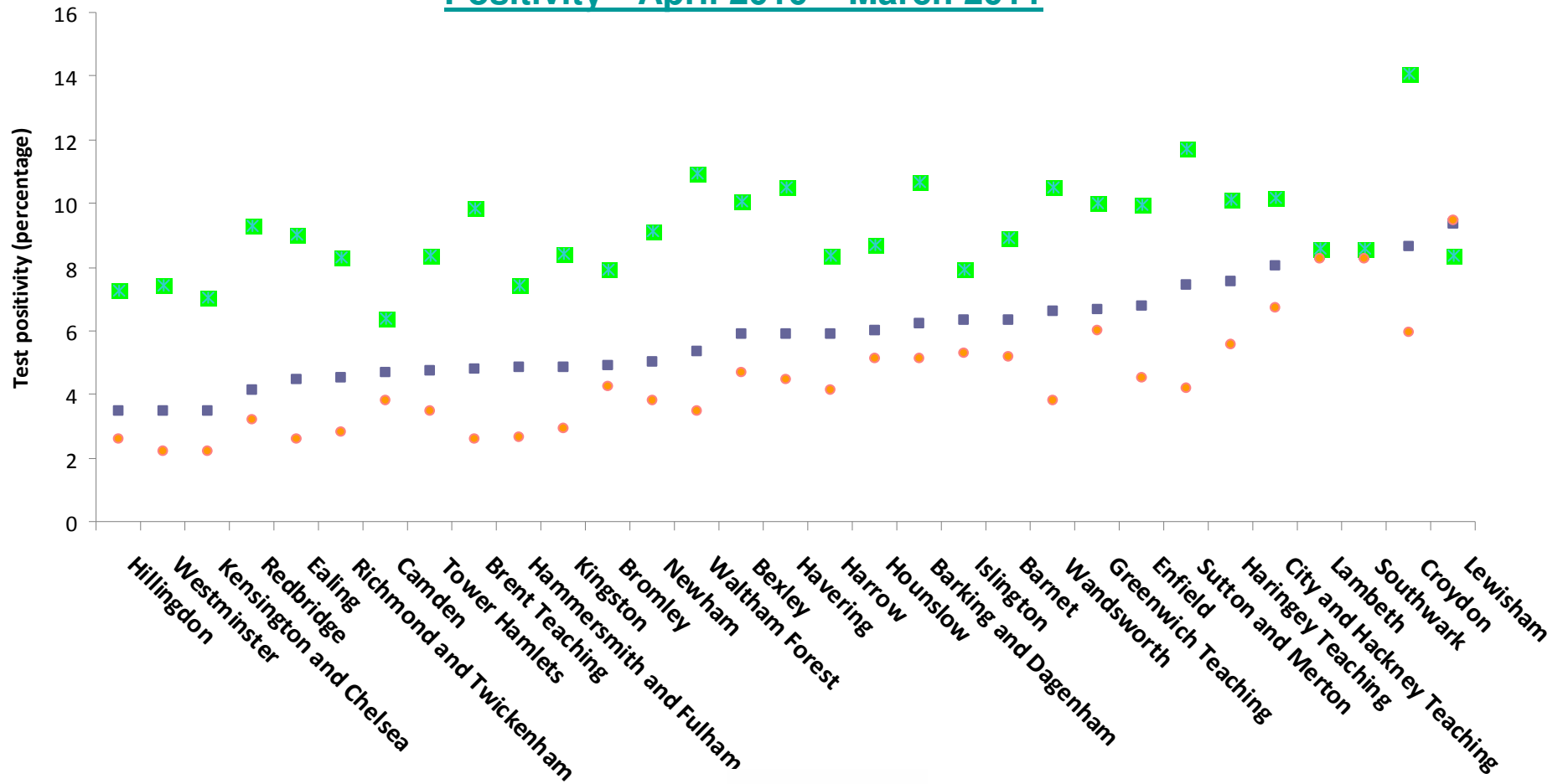
Coverage and Positivity including GUM Data* April 2010 – March 2011



* GUM Data (Jan – Dec 2010)

Based on those aged 15-24 years.

Positivity* April 2010 – March 2011



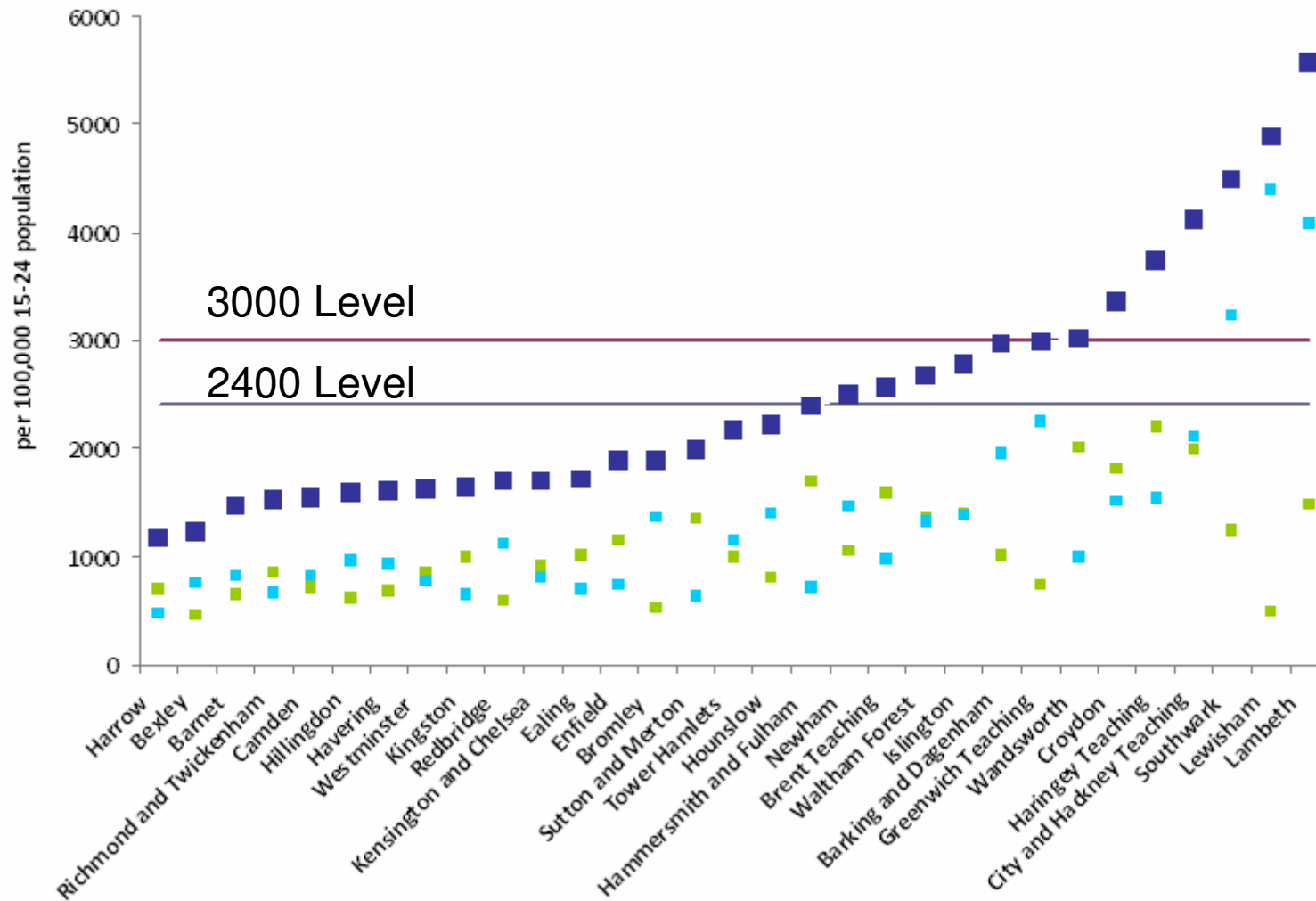
* GUM Data (Jan – Dec 2010)

- ALL POSITIVITY
- GUM POSITIVITY
- COMMUNITY POSITIVITY

Based on those aged 15-24 years.

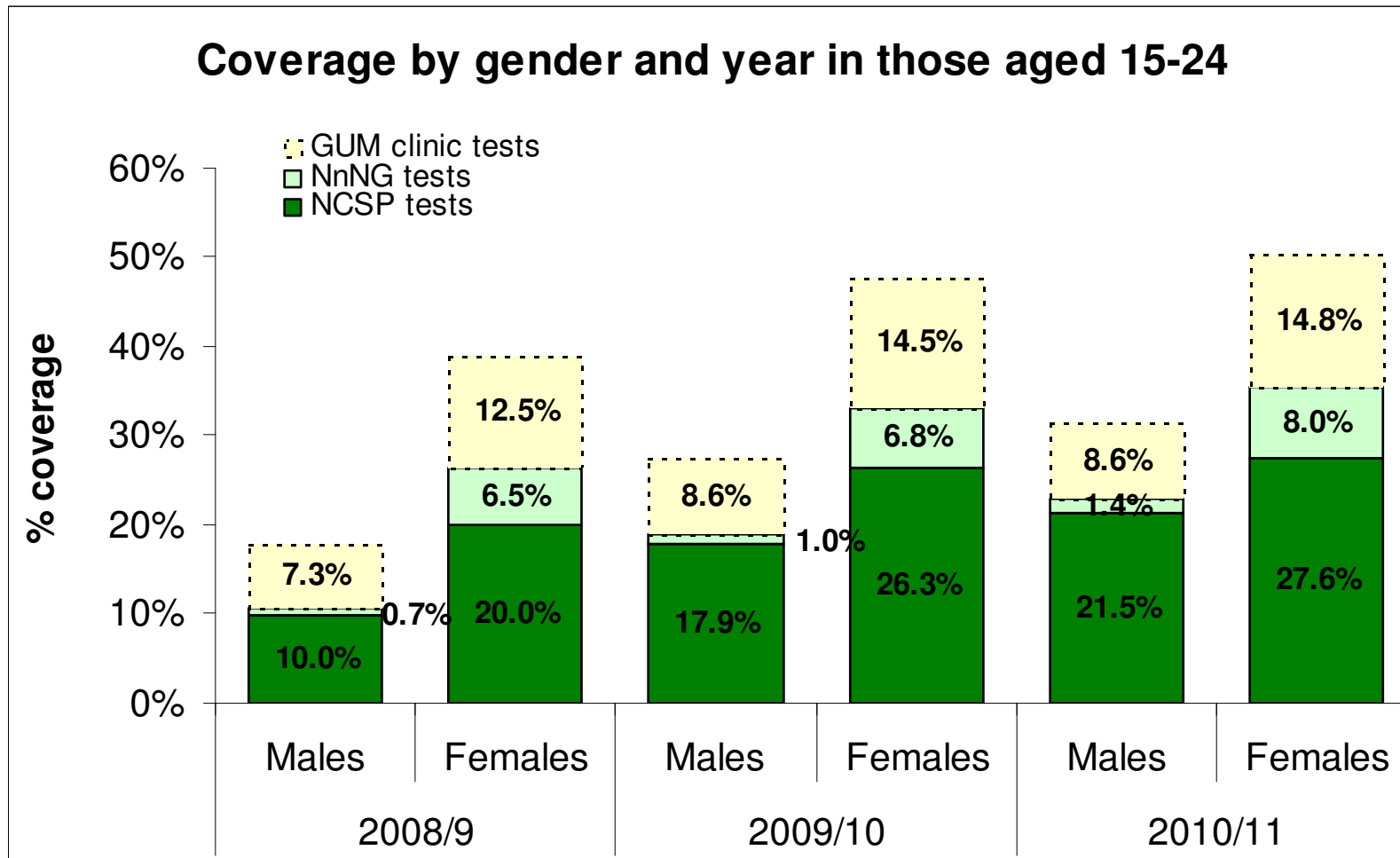
London

Diagnosis rates per 100,000 15-24 population Q1-4 2010/11



- 2,000 diag target
- 2,700 diag target
- ALL DIAGNOSIS
- GUM DIAGNOSIS
- COMMUNITY DIAGNOSIS

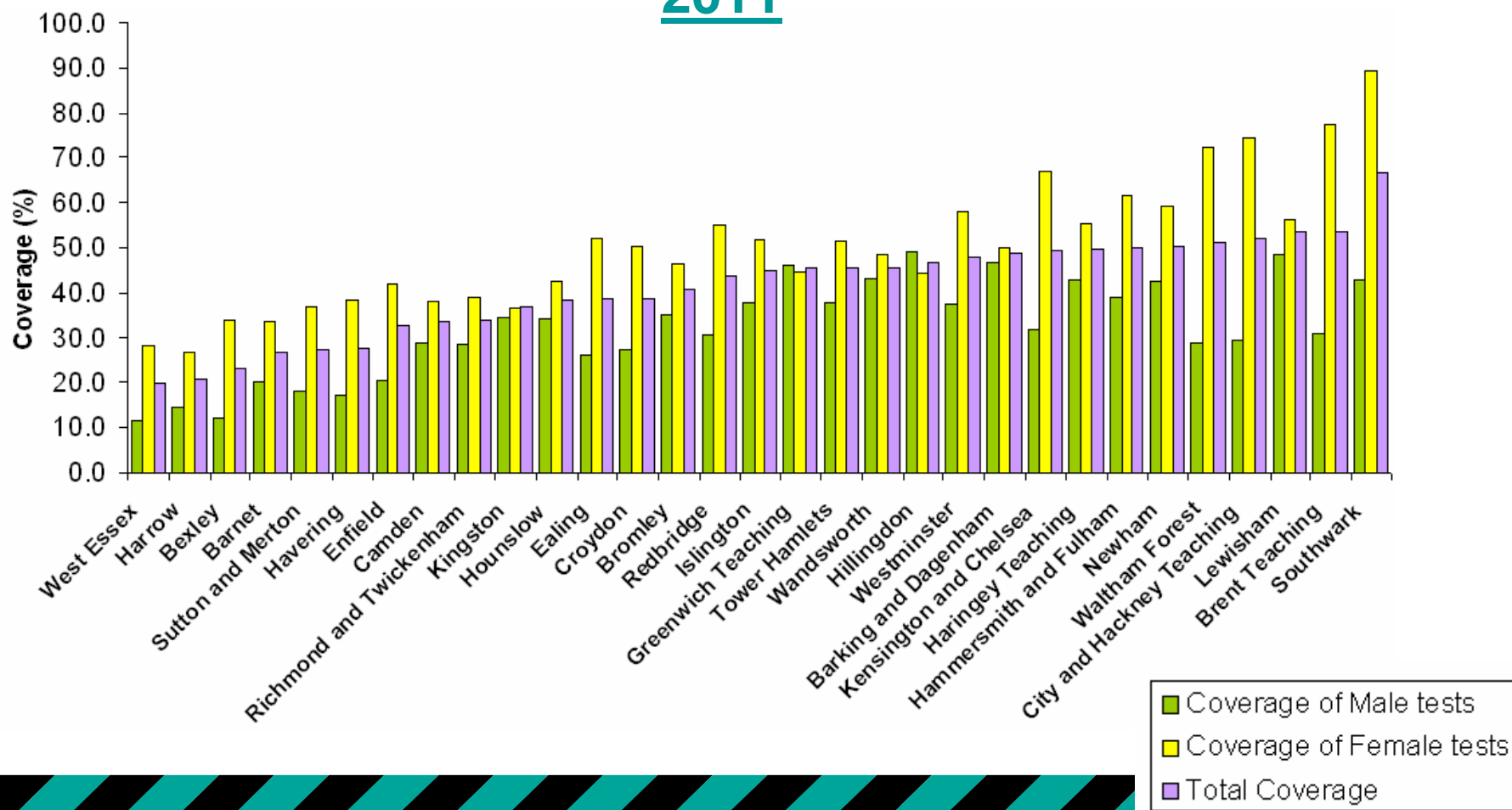
Data as of 25.05.11. Based on those aged 15-24 years.



- GUM Data (Jan – Dec calendar year)
- 2008/09 GUM Data not complete

Based on those aged 15-24 years.

Coverage by sex including GUM* April 2010 – March 2011

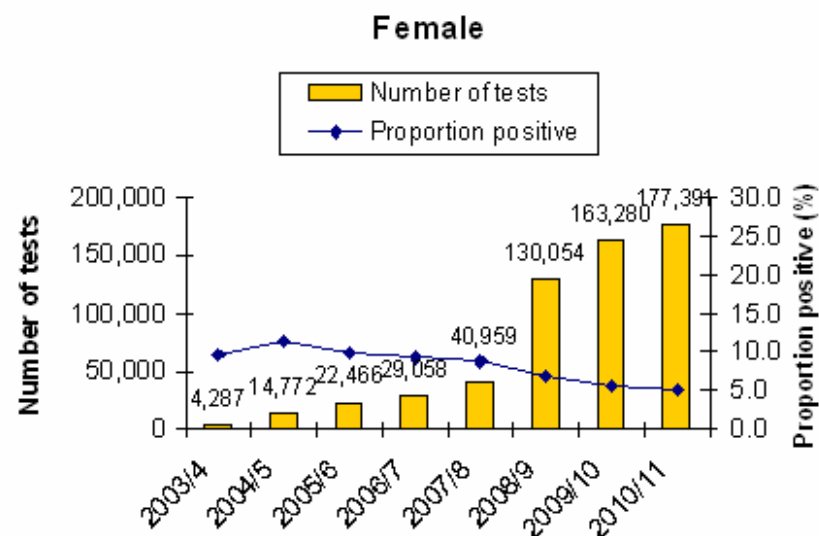
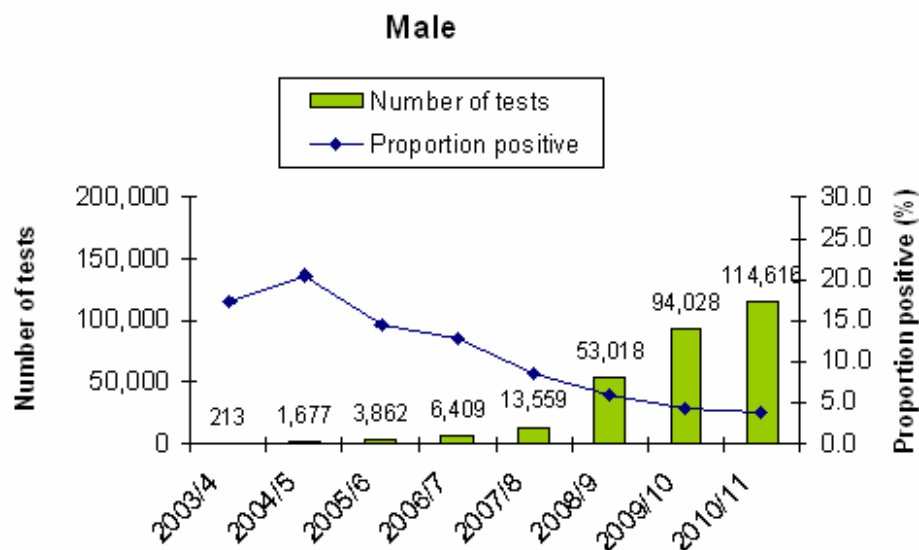


Data as of 25.05.11.

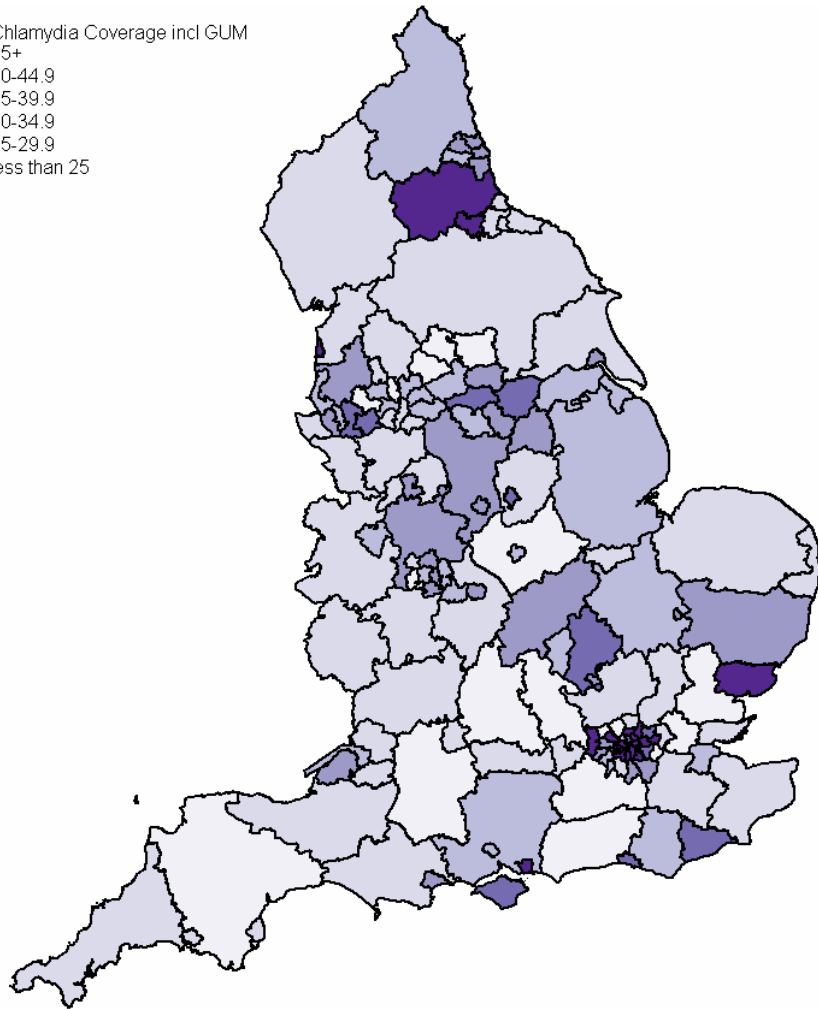
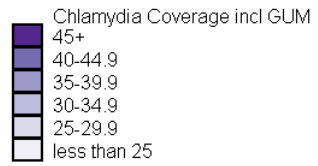
* GUM Data (Jan – Dec 2010)



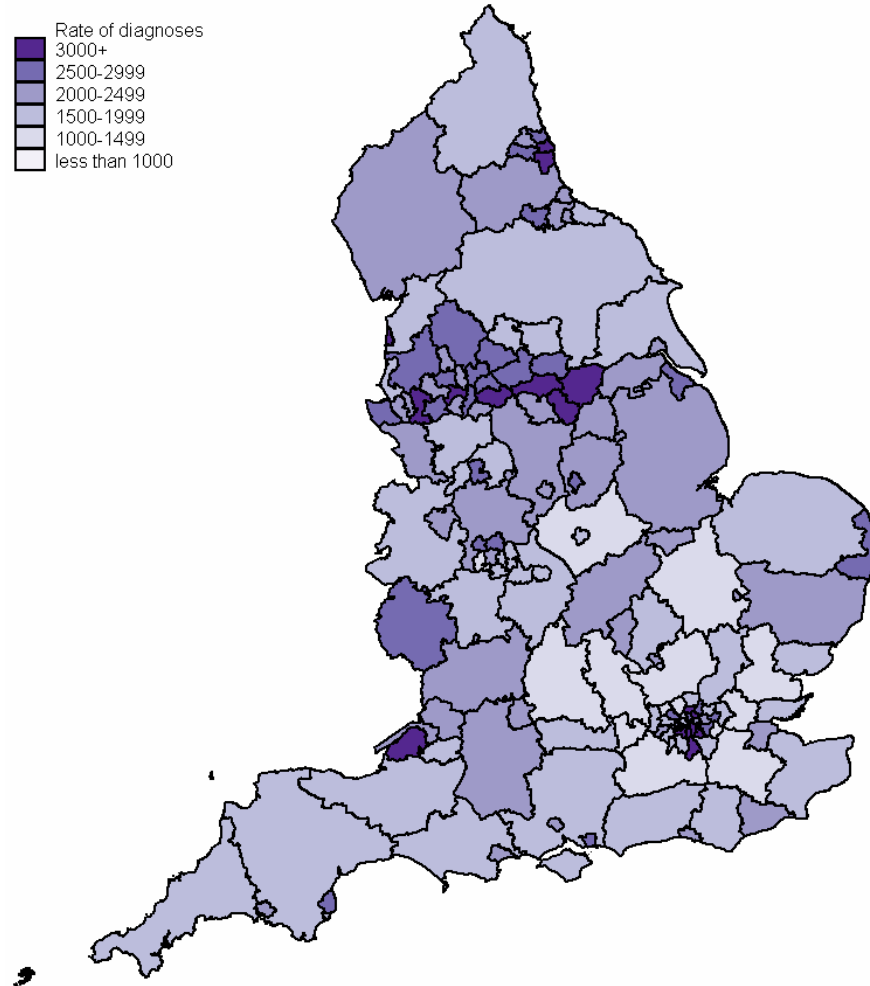
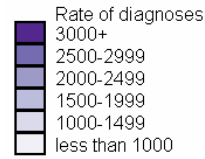
Testing volumes and proportion of positive cases by sex: April 2003 – March 2011



Coverage 2010/11

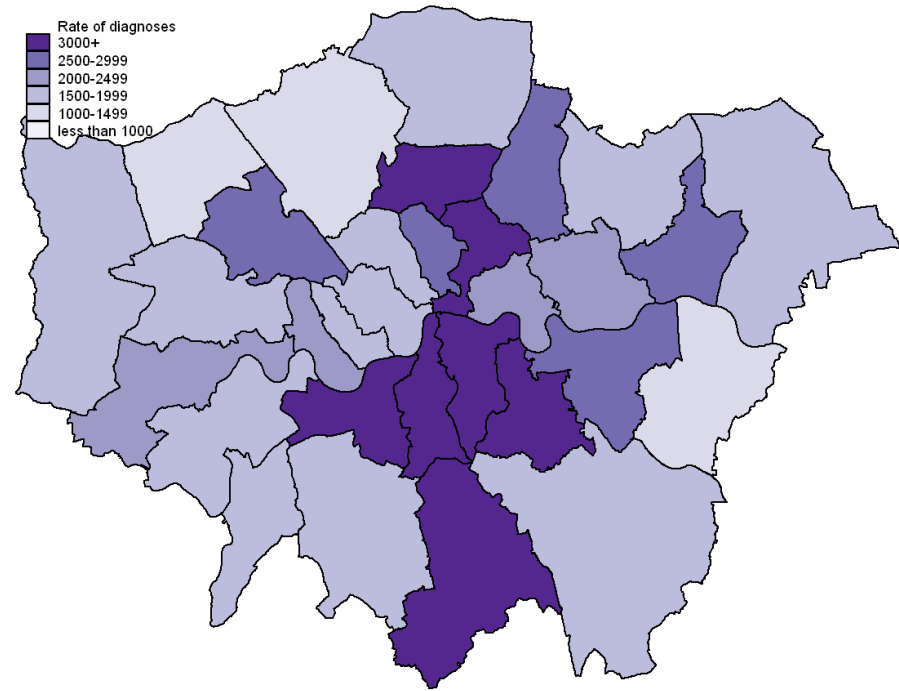
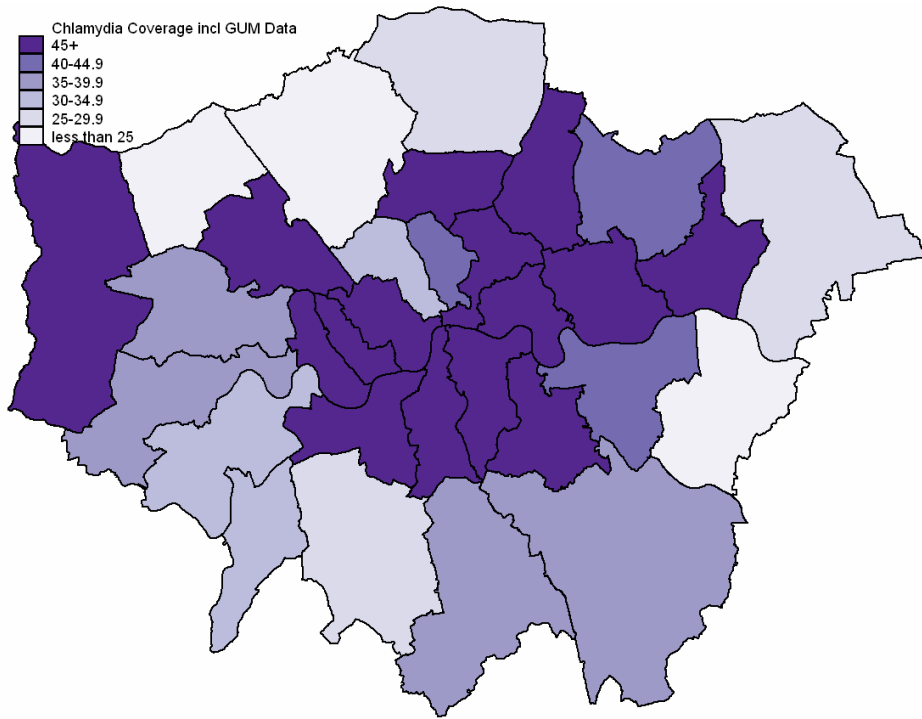


Diagnosis rate 2010/11



Coverage 2010/11

Diagnosis rate 2010/11

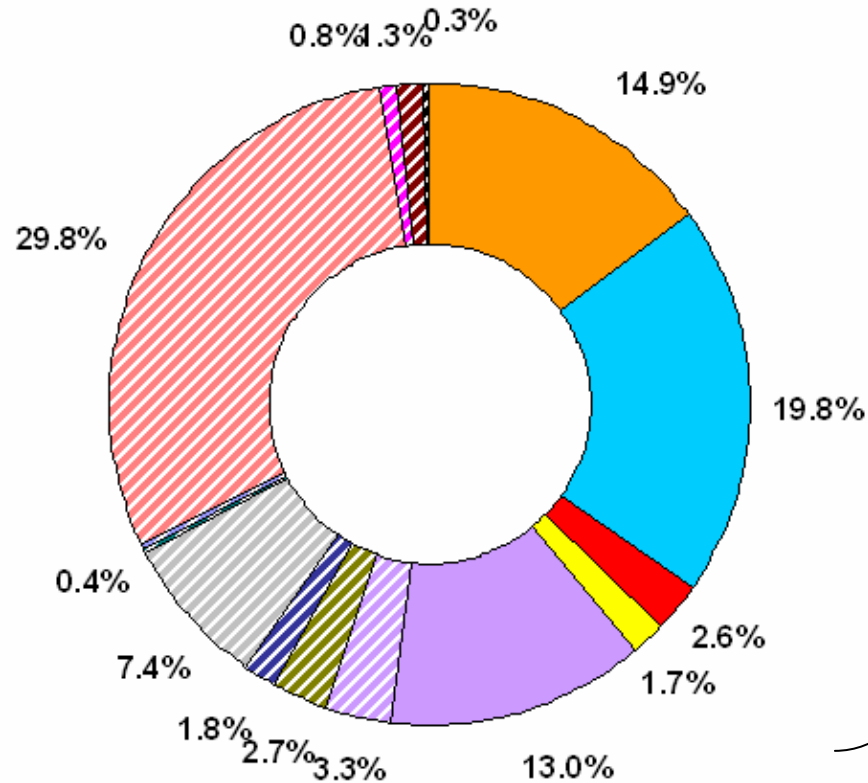


Screening venues

Testing Venues: April 2010 – March 2011

London
(n=291,130)

- CASH
- GP
- PHARMACY
- ToP
- Other Community core
- nNCSP nGUM non-core
- EDUCATION
- CSO
- REMOTE TESTING
- GYNAE & FERTILITY
- ANTENATAL & OBS
- MILITARY
- OUTREACH
- PRISON
- YOUTH
- OTHER



**52% in
Community
Core
Services**



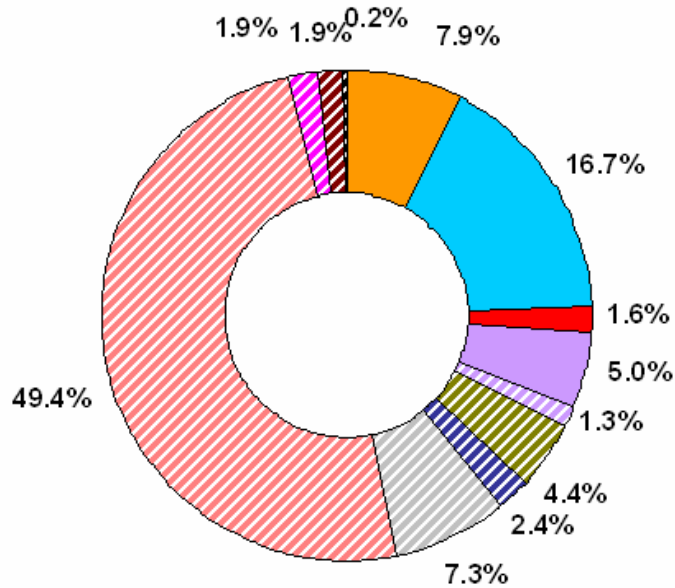
Proportion of core services reflects NCSP tests from GP, pharmacy, ToP and sexual health services as well as 80% of non NCSP non GUM tests. Coverage and positivity figures include non NCSP non GUM tests and NCSP tests but exclude GUM tests.

Based on those aged 15-24 years. VSI criteria.

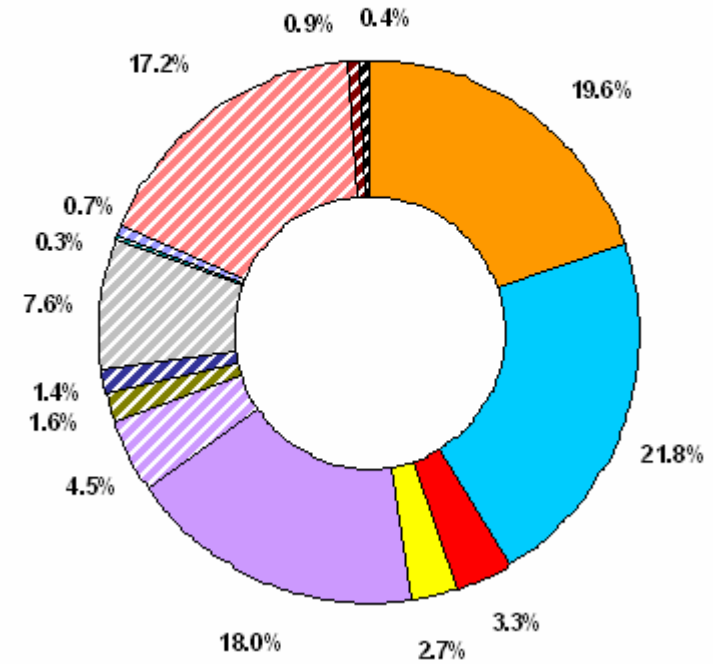
Testing Venues: April 2010 – March 2011



London - Male
(n=113,873)



London - Female
(n = 175,196)



- CASH
- GP
- PHARMACY
- ToP
- Other Community core
- nNCSP nGUM non-core
- EDUCATION
- CSO
- REMOTE TESTING
- GYNÆ & FERTILITY
- ANTENATAL & OBS
- MILITARY
- OUTREACH
- PRISON
- YOUTH
- OTHER

Proportion in Community Core Services – 31.2%

Proportion in Community Core Services – 65.4%

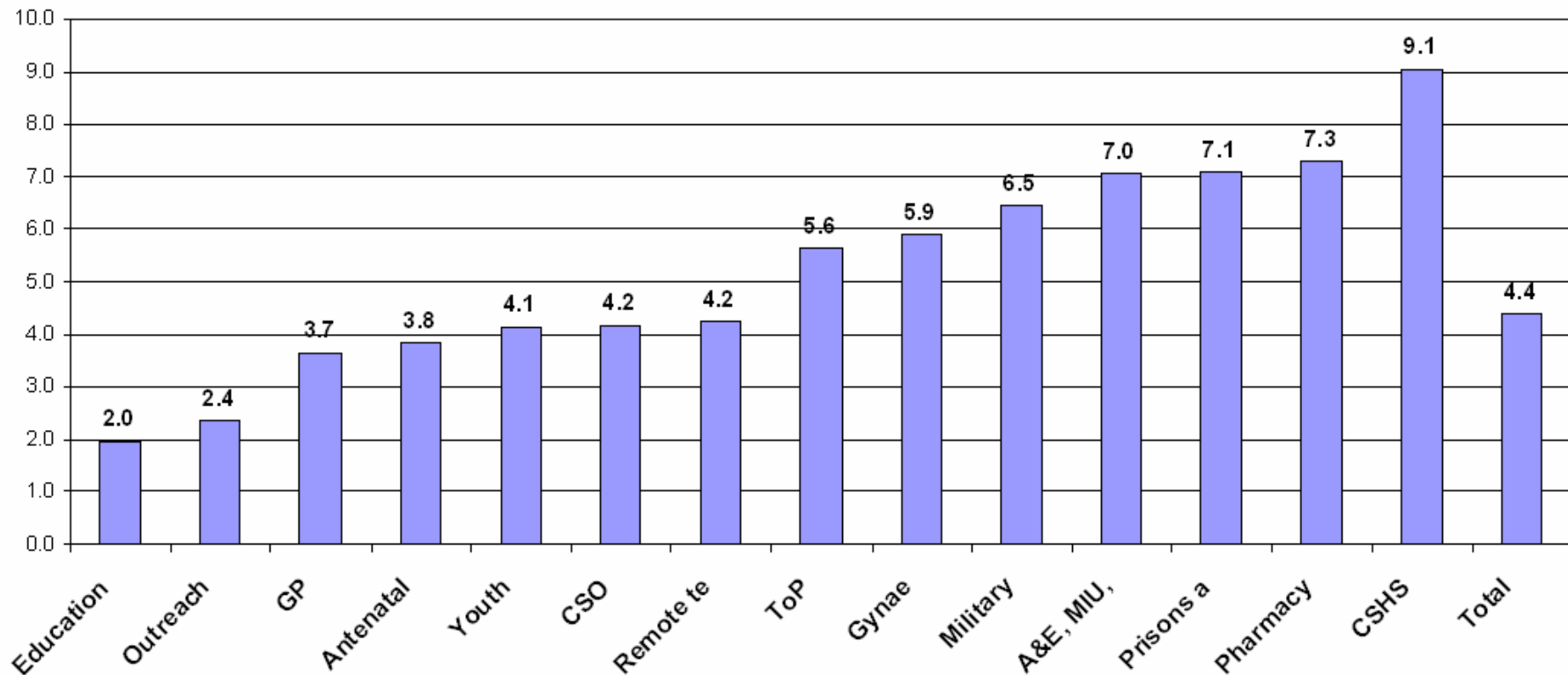


Proportion of core services reflects NCSP tests from GP, pharmacy, ToP and sexual health services as well as 80% of non NCSP non GUM tests. Coverage and positivity figures include non NCSP non GUM tests and NCSP tests but exclude GUM tests.

Based on those aged 15-24 years. VSI criteria.

London

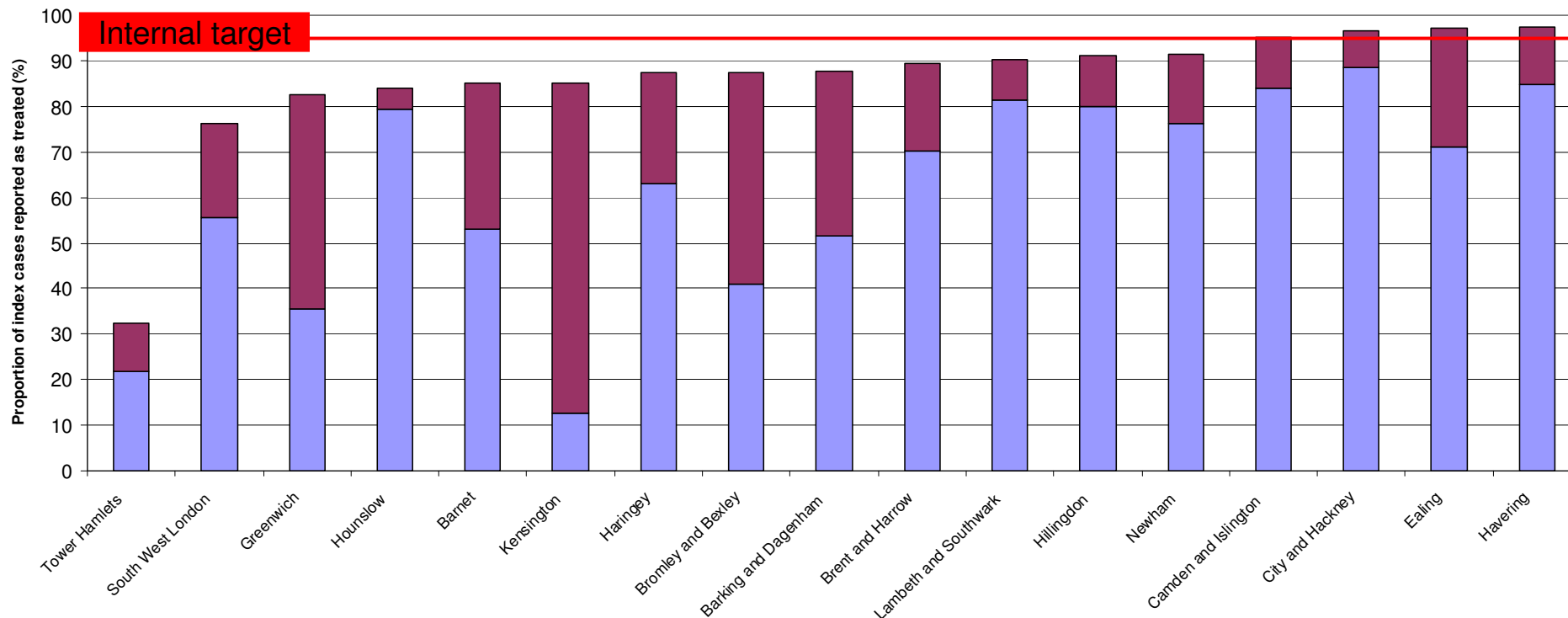
Proportion of positive cases by venue type: April 2010 – March 2011



Treatment and Partner Management

(April 2010 – December 2010)

Proportion of positive index patients reported as treated: London April 2010 – December 2010



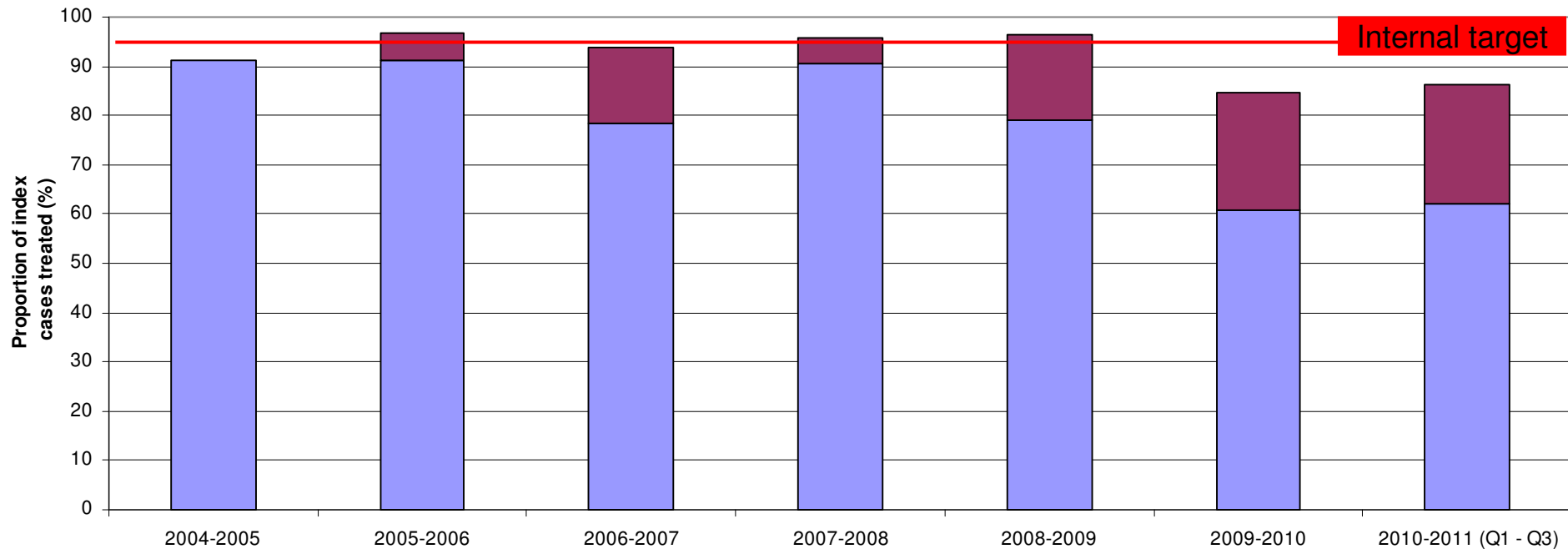
* Enfield did not submit PN data for Quarters 1 to 3



■ Patient confirmed treatment
■ Clinician confirmed treatment

Data as of 24.05.11. Data based on PN data returns. Data represents all programme areas who have submitted at least one quarter's worth of data.

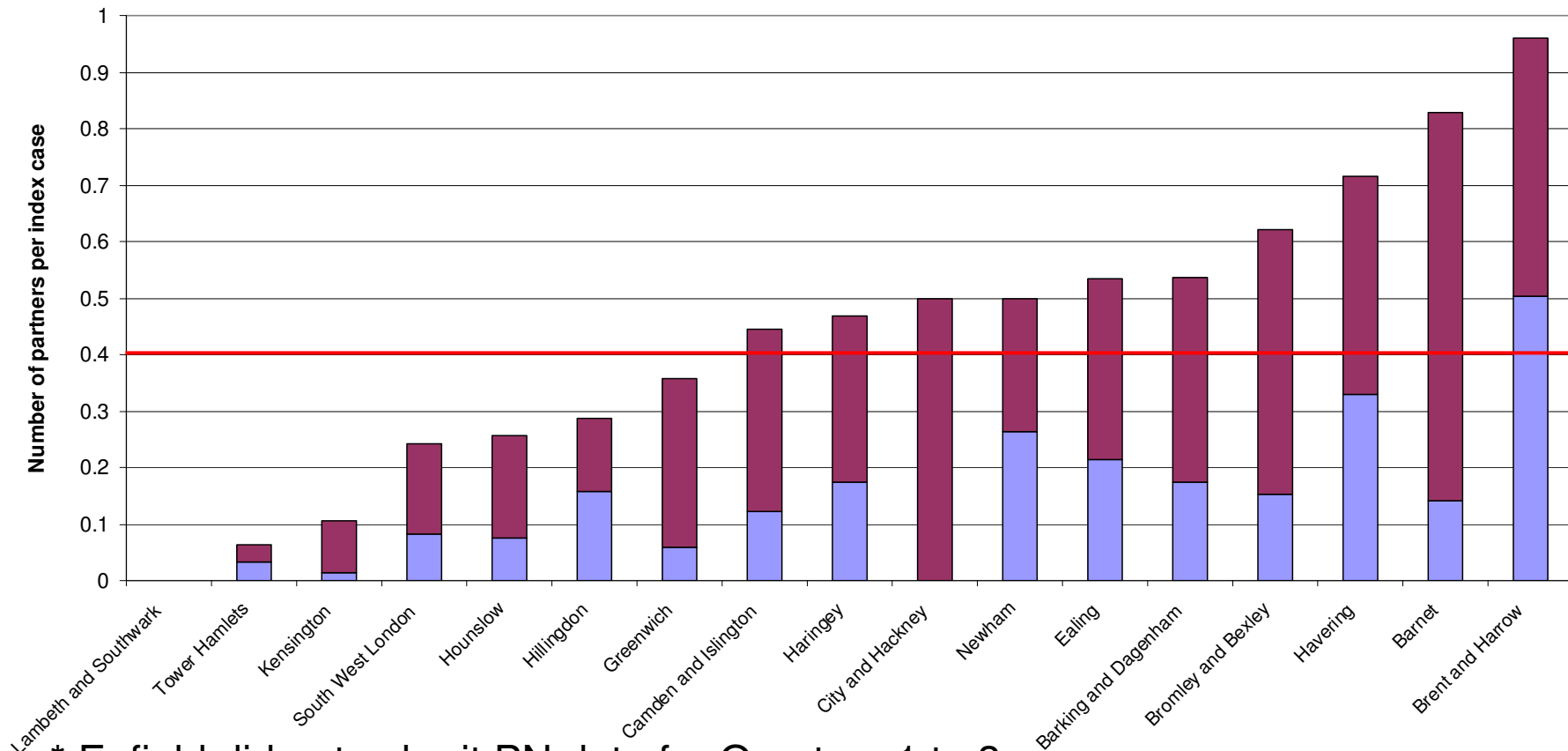
Trend in the proportion of positive index patients reported as treated: London April 2004 – December 2010



- Patient confirmed treatment
- Clinician confirmed treatment

Data as of 24.05.11. Data based on PN data returns. Data represents all programme areas who have submitted at least one quarter's worth of data in the year.

Number of partners treated per index case: London April 2010 – December 2010



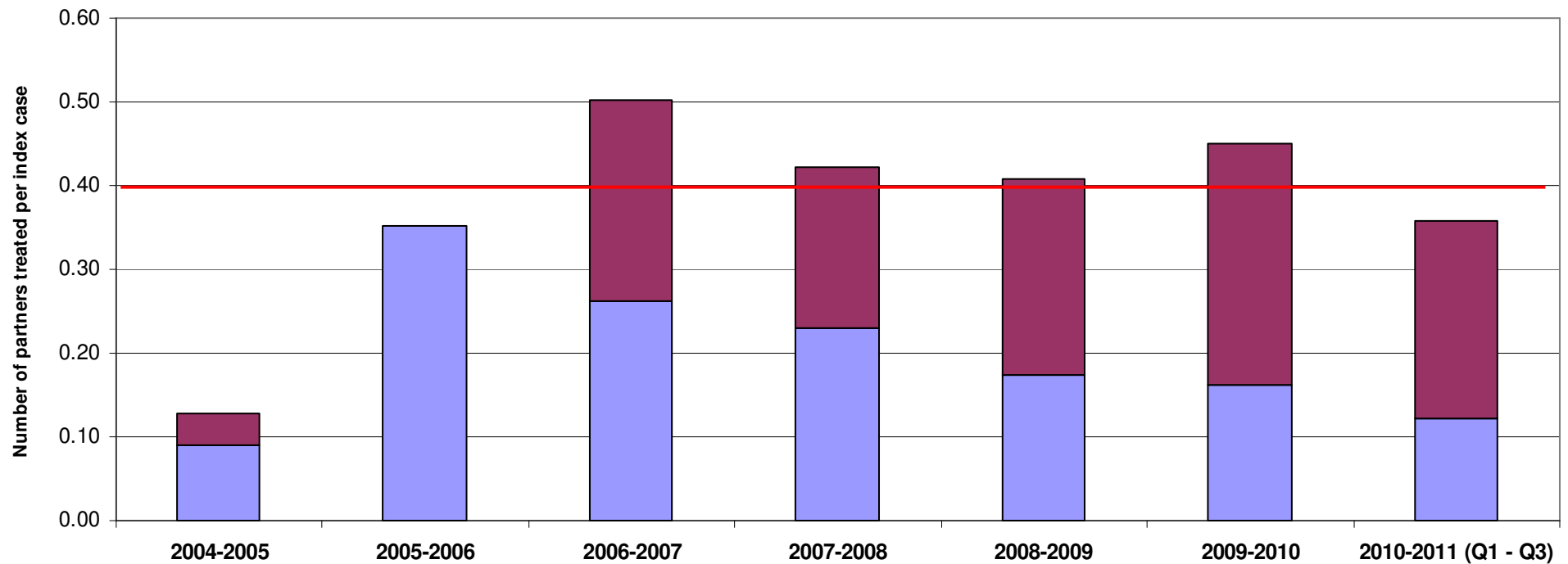
* Enfield did not submit PN data for Quarters 1 to 3



■ Patient confirmed treatment
■ Clinician confirmed treatment

Data as of 24.05.11. Data based on PN data returns. Data represents all programme areas who have submitted at least one quarter's worth of data.

Trend in the number of partners treated per index case: London April 2004 – December 2010

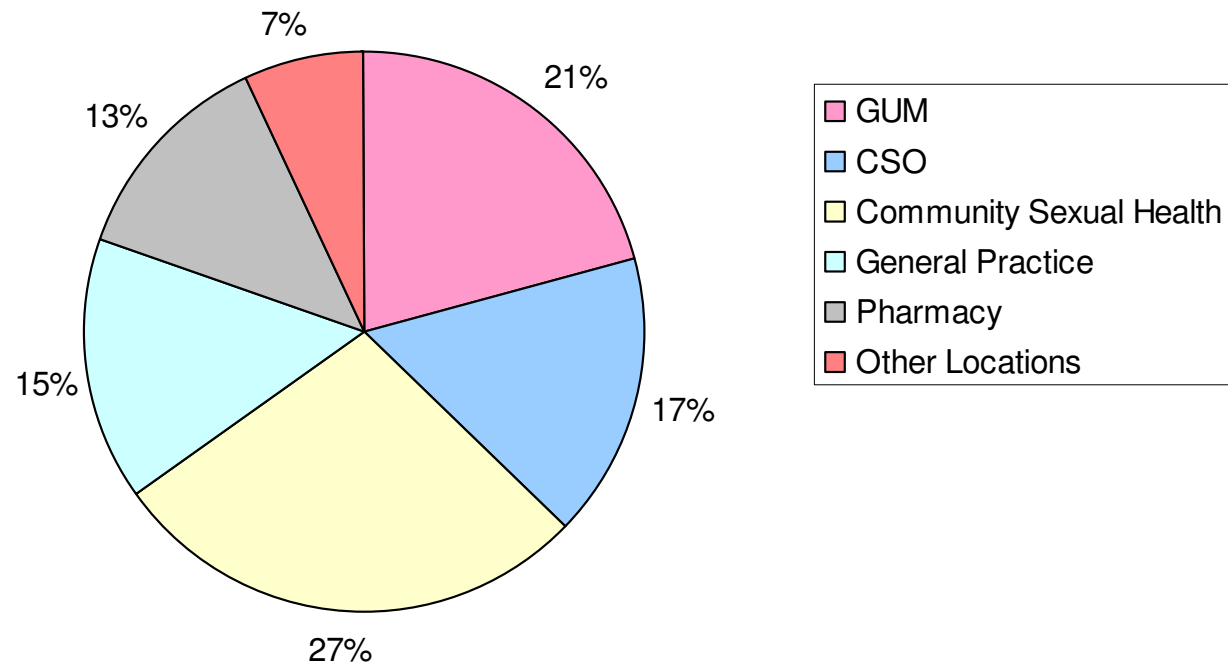


- Patient confirmed treatment
- Clinician confirmed treatment

Data as of 24.05.11. Data based on PN data returns. Data represents all programme areas who have submitted at least one quarter's worth of data.

Proportion of index cases treated in various venue types: London (April 2010 – December 2010)

London figure: (n = 5,995)

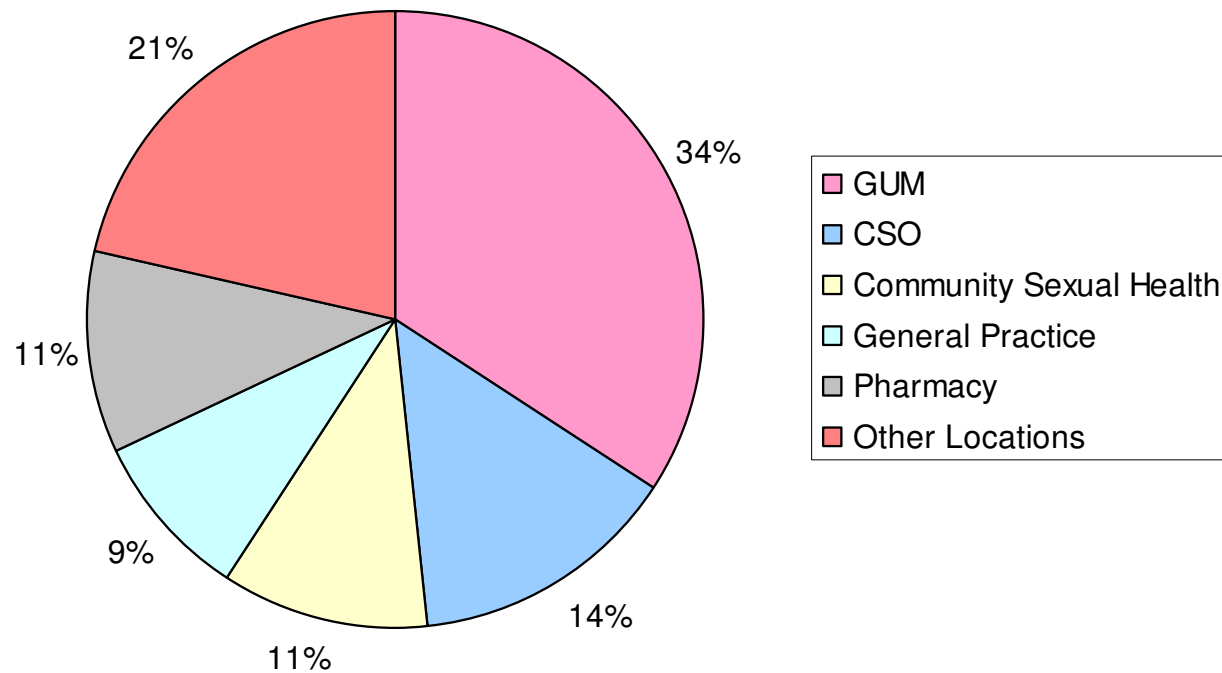


We currently do not collect disaggregate data on the 'Other Locations' category. This refers to any venue that has a qualified health professional present, such as a school nurse, or prison doctor.

Data as of 24.05.11

Proportion of partners treated in various venue types: (April 2010 – December 2010)

London figure: (n = 2,491)



We currently do not collect disaggregate data on the 'Other Locations' category. This refers to any venue that has a qualified health professional present, such as a school nurse, or prison doctor.

Data as of 24.05.11